

BECOME A MEMBER:

Solomon Valley Economic Development has been advancing the prosperity of the area for over sixty years. The good works of our founders have laid the ground work for our solid standing. We are proud to contribute towards a greater impact by developing over \$100 million in capital investments throughout the Solomon Valley. As we look towards the future, will you join us to help guide and inspire the growth of the Solomon Valley?

60
years

Our mission is to facilitate future growth by collaborating to build vibrant communities.

BE IN THE KNOW AND JOIN OUR TEAM.



HOW TO JOIN:

To join please visit:

<https://www.mitchellcountykansas.com/>

You will find the SVED application under the Economic Development Tab on the SVED Membership - Join! page.

MEMBERSHIP DUES:

\$100 for the first year

\$25 each additional year

CONTACT US:

SVED EXECUTIVE DIRECTOR

Emily Benedick

785-738-3000

ebenedick@beloitks.org

OUR MISSION

To facilitate future growth by collaborating to build vibrant communities and celebrate success.

support • provide • promote • ensure

60
years

OUR HISTORY:

In 1959 BID, Beloit Industrial Development later known as Solomon Valley Economic Development (SVED), was established by a number of community minded individuals with a vision of advancement of the surrounding areas. In 1959, SVED had 100 original shareholders that each contributed \$100. That original \$100 would be equivalent to \$900 now in 2019.

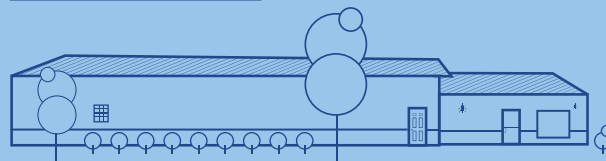
There is no greater testimony to the spirit of Beloit and the region than the individuals and businesses who stepped forward at the beginning to purchase shares of stock in Beloit Industrial Development Corporations, Inc. With no prospect of profit, their investment was made for the purpose of enhancing and expanding the economy and quality of life in this area. Their support and confidence will always be appreciated and that spirit continues to inspire the organization and the area.

SVED has been instrumental in helping the development of many ideas and projects which have benefited the area. SVED has been a good partner with other organizations in the community, which are important in meeting community development, such as Mitchell County Community Development, Leadership Mitchell County, Mitchell County Convention and Tourism, and Mitchell County Historical Society and many private ventures.

SVED meets every third Thursday of the month in discussion of future projects.

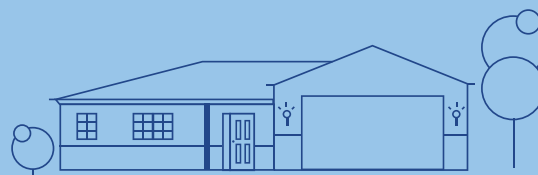


WHAT WE'VE DONE RECENTLY:



* SVED Business Park

SVED offers a business park bordered by two highways in the city of Beloit. The park is available for commercial and light manufacturing businesses.



* Crown Homes Project: Providing low income housing.

In recognizing housing needs in our communities, SVED was the facilitator of the concept to expand housing opportunities in Beloit and coordinated the efforts with the tax credit process, developers and owners of the projects. The Crown Home Project has added 9 well built, attractive and functional homes to the inventory of Beloit. It will benefit many lives over the life of the units, while adding to the tax base of the county and city.



* SVED Intern

In 2019, SVED partnered with other community organizations to host interns in our community. The projects the interns were able to achieve were broad-based and forward-thinking.

WHAT'S NEXT:

As community issues arise, SVED will partner with others or lead the charge in discussions and actions to meet community needs. These community endeavors can vary from initiating studies for community business, housing and infrastructure need, to finding the right partners in accomplishing needed tasks.

As SVED continues to grow and develop the surrounding areas, we are looking towards the future for new opportunities. Where does our road lead?

Business Development - We will continue to attract new and existing businesses by being a progressive community that works together.

Entrepreneurship – We will “grow our own” entrepreneurs by supporting youth entrepreneurship.

Leadership and Community Engagement – We will continue to be a facilitator of local leadership development.

Co-working Culture – We will create a co-working space that expands the talent and workforce of our communities.

Quality of Life – We will build our communities to promote an exceptional quality of life.

We want to be a catalyst for economic development and foster a strong economic environment to support our businesses, nurture growth and new investment in our communities.

ARE YOU A COMMUNITY MINDED INDIVIDUAL?